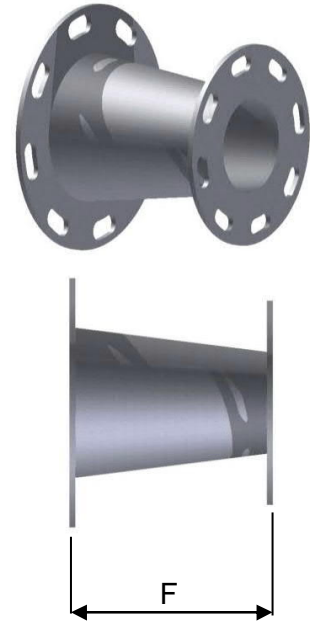


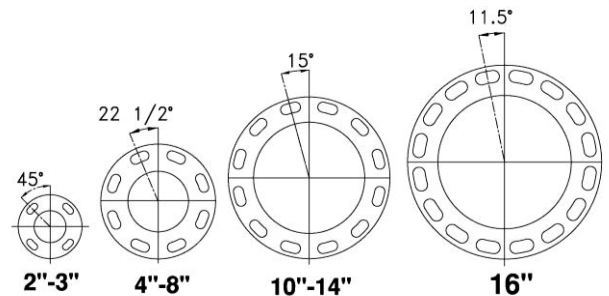
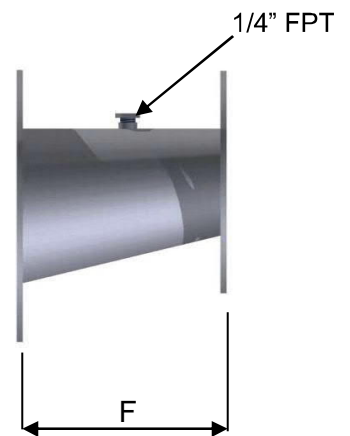
CONCENTRIC REDUCERS

All dimensions are in inches		
Size	Part #	"F"
3 x 2	1001-3400	6
3 x 2 1/2	1001-9787	6
4 x 2	1000-6177	7
4 x 2 1/2	1000-6359	7
4 x 3	1000-6183	7
5 x 4	1001-3788	8
6 x 2 1/2	1001-9786	9
6 x 3	1000-6208	9
6 x 4	1000-6215	9
6 x 5	1001-7975	9
8 x 3	1000-6241	11
8 x 4	1000-6247	11
8 x 5	1000-6253	11
8 x 6	1000-6260	11
10 x 5	1001-9788	12
10 x 6	1000-6293	12
10 x 8	1000-6301	12
12 x 6	1001-3401	14
12 x 8	1001-3402	14
12 x 10	1000-6507	14
14 x 8	1001-9789	16
14 x 10	1001-9830	16



ECCENTRIC REDUCERS

All dimensions are in inches		
Size	Part #	"F"
3 x 2	1001-6141	6
3 x 2 1/2	1001-9832	6
4 x 2	1001-9833	7
4 x 2 1/2	1001-9840	7
4 x 3	1001-4101	7
5 x 4	1001-9834	8
6 x 3	1001-7704	9
6 x 4	1000-6219	9
6 x 5	1000-6226	9
8 x 4	1001-9835	11
8 x 5	1001-3787	11
8 x 6	1000-6264	11
10 x 5	1001-5737	12
10 x 6	1000-6297	12
10 x 8	1001-9836	12
12 x 6	1000-6319	14
12 x 8	1001-6663	14
12 x 10	1001-8737	14
14 x 8	1001-9838	16
14 x 10	1001-3403	16
14 x 12	1001-9839	16
16 x 8	1001-9829	18
16 x 10	1001-9828	18
16 x 12	1001-9827	18



Flanges Meet ANSI Standard 125# Flange Drilling.
 "F" dimension $\pm 1/8$ ". Consult Neptune Benson on specific fits.
 Install eccentric reducers with flat up, as detailed.
 Material: T316 Stainless Steel.
 Exterior of reducer including flanges shall have a bead blasted finish.

Flange Orientation

R 3/15/16