



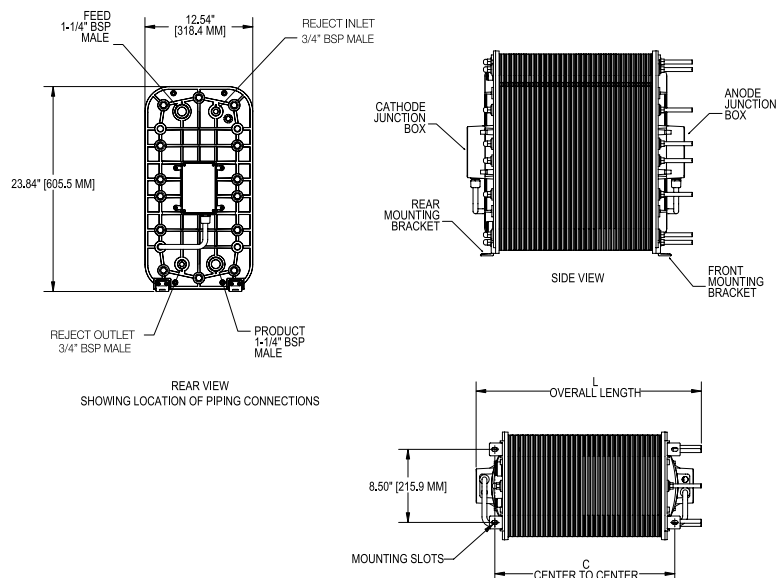
eVOQUA
WATER TECHNOLOGIES



IONPURE® LX-Z ENHANCED PERFORMANCE CONTINUOUS ELECTRODEIONIZATION (CEDI) MODULES FOR INDUSTRIAL APPLICATIONS

IONPURE LX-Z — INDUSTRIAL CEDI MODULE

The Ionpure® LX-Z industrial modules generate high purity water through electrodeionization and are specifically designed for industrial applications. Ionpure modules consistently deliver maximum reliability and superior performance for power, HPI/CPI and general electronics without regeneration downtime.



LX-Z Series Features

- Significantly lower operating costs, than conventional ion exchange
- Generates mixed-bed quality deionized water without the use of chemicals
- Continuous production instead of batch, with consistent quality
- Double O-ring seal guarantees leak-free operation
- No need for acid/caustic, neutralization system or exchangable DI tanks
- Proprietary "all-filled" concentrating compartments eliminate recirculation pump and brine injection
- Superior electrical isolation
- Continuous operation

For additional information on our LX-Z industrial series of modules call +1 866.876.3340 or visit our web site at www.ionpure.com.

OPERATING ENVIRONMENT

Installation should be indoors with no direct sunlight and should have a maximum ambient temperature of 113°F (45°C).

QUALITY ASSURANCE STANDARDS

CE marked. Each module is factory tested to meet strict industry standards and is manufactured in an ISO 9001 and ISO 14000 quality and environmental management system.

Halal Certification. All Ionpure modules are manufactured in accordance with the Islamic Food and Nutrition Council of America standards (IFANCA), and will carry the Crescent M Halal logo.

Typical Module Performance

Operating Parameters	
Recovery	90 - 95%
Pressure Drop Range at Nominal Flow	25 - 37 psi (1.7 - 2.5 Bar)
DC Voltage	0 - 300
DC Amperage	1.0 - 6.0
Product Water Quality	
Product Resistivity	Minimum Flow > 17 Megohm-cm**
	Nominal Flow > 15 Megohm-cm**
	Maximum Flow > 7 Megohm-cm**
Silica (SiO ₂) Removal	90 - 99%, depending on feed conditions

*Actual performance may be determined using the IP-Pro projection software available from Ionpure
 * Performance based on maximum Feed Water Conductivity Equivalent (40 µS/cm).

FLOW AND PHYSICAL SPECIFICATIONS

Model Number	Product Flow min. gpm (m ³ /hr)	Product Flow nominal gpm (m ³ /hr)	Product Flow max. gpm (m ³ /hr)	Shipping Weight lbs* (kg)	Operating Weight lbs (kg)
IP-LXM04Z	1.0 (0.22)	2.0 (0.44)	3.0 (0.67)	130 (59)	69 (31)
IP-LXM10Z	2.5 (0.55)	5.0 (1.1)	7.5 (1.65)	171 (78)	113 (51)
IP-LXM18Z	4.5 (1.1)	9.0 (2.0)	13.5 (3.1)	217 (99)	163 (74)
IP-LXM24Z	6.3 (1.4)	12.5 (2.8)	18.8 (4.2)	254 (115)	203 (92)
IP-LXM30Z	7.5 (1.65)	15.0 (3.3)	22.5 (5.11)	291 (132)	243 (110)
IP-LXM45Z	11.3 (2.55)	22.5 (5.1)	33.8 (7.67)	451 (205)	345 (157)

* Includes shipping crate

Feed Water Specifications

Feed Water Conductivity Equivalent, including CO ₂ and Silica	< 40 µS/cm
Feed Water Source	RO permeate
Temperature	41 - 113°F (5 - 45°C)
Inlet Pressure	≤ 100 psi (6.9 bar)
Maximum Total Chlorine (as Cl)	< 0.02 ppm
Iron (as Fe)	< 0.01 ppm
Manganese (as Mn)	< 0.01 ppm
Sulfide (S ²⁻)	< 0.01 ppm
pH	4 - 11
Total Hardness (as CaCO ₃)	< 1.0 ppm
Dissolved Organics (TOC as C)	< 0.5 ppm
Silica (SiO ₂)	< 1.0 ppm

Physical Specifications

Item Number	Dimensions	
	L +/- 0.25" (6.4 mm)	C +/- 0.13" (3.2 mm)
LXM04Z	10.12" (257 mm)	5.78" (146.8 mm)
LXM10Z	13.69" (347.7 mm)	9.28" (235.7 mm)
LXM18Z	19.22" (488.2 mm)	13.93" (353.8 mm)
LXM24Z	23.69" (601.7 mm)	17.43" (442.7 mm)
LXM30Z	27.42" (696.5 mm)	20.92" (531.3 mm)
LXM45Z	35.72" (907.3 mm)	29.44" (747.7 mm)



210 Sixth Avenue, Suite 3300, Pittsburgh, PA 15222

+1 (866) 926-8420 (toll-free) +1 (978) 614-7111 (toll)

www.ionpure.com

Ionpure is a trademark of Evoqua, its subsidiaries or affiliates, in some countries.

All information presented herein is believed reliable and in accordance with accepted engineering practices. Evoqua makes no warranties as to the completeness of this information. Users are responsible for evaluating individual product suitability for specific applications. Evoqua assumes no liability whatsoever for any special, indirect or consequential damages arising from the sale, resale or misuse of its products.

© 2018 Evoqua Water Technologies LLC Subject to change without notice ION-LXZ-DS-0818