

INTAKE PRODUCTS

COMPLETE INTAKE SYSTEMS

Evoqua offers complete Intake Screening Systems, which include:

- Traveling Water Screens
- Trash Rakes
- Bar Racks
- Stop Gates
- Spray Wash Pumps
- Interconnecting Piping
- Trash Baskets
- Electrical Controls

TRAVELING WATER SCREENS

- Through Flow Traveling Water Screen
- Dual Flow Traveling Water Screen
- Dual Flow Retrofit

Key Features:

- Robust framework able to handle high differential loading
- Up to 50% lighter basket design reduces hanging weight, motor torque, wear and maintenance

FISH PROTECTION TECHNOLOGY

- 316(b) BTA Modified Ristroph Fish handling Traveling Water Screen

Key Features:

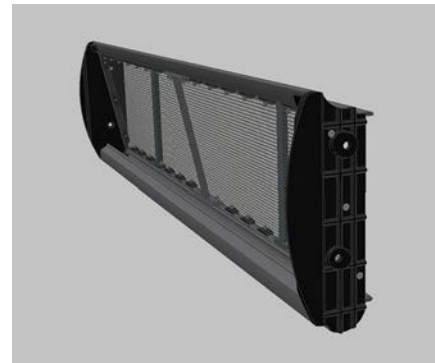
- EPA Compliant
- Recognized BTA non-metallic modified Ristroph baskets
- Molded fish bucket minimized turbulence due to a cross section not featured in conventional steel fish baskets

GRAB RAKES

- Suspended Grab-Style Trash Rake
- Traversing Rake
- Stationary Guided Rake

Key Features:

- High speed operation with VFD
- Heavy duty capacity up to 1,500 lbs
- Standard control logic
- Automatic operation



INTAKE PARTS AND SERVICE

REBUILDS AND RETROFITS

- Certified dive crews providing top-side and underwater inspections, installations and repairs
- On-site and factory rebuilds
- Maintenance contracts to extend life, reducing operating costs and downtime
- Call us about getting a system health check for optimizing your screens



OEM PARTS

- Your source for over 100 years of OEM parts
- Major wear components in stock
- Dedicated Intake account representatives backed by expert engineers



ABOUT EVOQUA

Evoqua Water Technologies is a leader in water and wastewater treatment for industrial and municipal customers. Built on more than a century of experience, Evoqua delivers comprehensive, cost-effective and reliable treatment equipment, solutions and services to add value for customers, enable environmental regulatory compliance and uninterrupted quantity and quality of water, and reduce energy use. With a wide range of trusted, proven brands and advanced water and wastewater treatment technologies, mobile solutions, project and services, Evoqua helps cities reduce the cost of producing clean water and industrial plants maintain productivity and profitability. Evoqua also is a primary OEM resource to the industry for upgrade, retrofit or replacement equipment and projects.

Evoqua encompasses the industry's best known and most trusted brands:

- Rex®
- Link-Belt®
- Envirex®
- Royce
- FMC®
- USFilter®
- Chain Belt Company



FOR MORE INFORMATION

500 Horizon Drive Suite 503, Chalfont, PA 18914

+1 (800) 207-9490 (toll-free)

+1 (800) 712-0280 (toll)

www.evoqua.com/fish-protection-screen

Envirex and USFilter are trademarks of Evoqua, its subsidiaries or affiliates in some countries. Link-Belt is a trademark of Link-Belt Construction Equipment Company, LP., LLLP. Rex and Rexnord are trademarks of Rexnord Industries, LLC. FMC is a trademark of FMC Corporation.

All information presented herein is believed reliable and in accordance with accepted engineering practices. Evoqua makes no warranties as to the completeness of this information. Users are responsible for evaluating individual product suitability for specific applications. Evoqua assumes no liability whatsoever for any special, indirect or consequential damages arising from the sale, resale or misuse of its products.

© 2014 Evoqua Water Technologies LLC Subject to change without notice EP-FISH-LC-1014