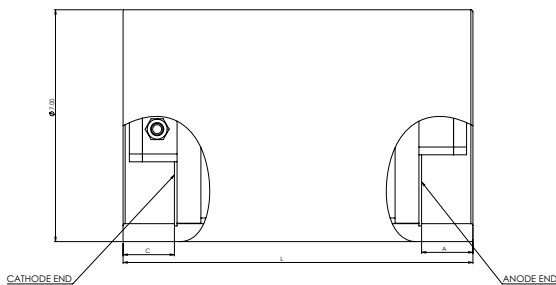
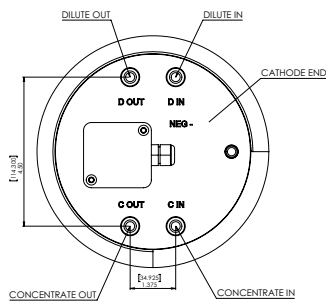




## IONPURE® MX LOW FLOW CONTINUOUS ELECTRODEIONIZATION (CEDI) MODULES

### IONPURE MX MODULES

The Ionpure® MX Series modules are designed with proven continuous electrodeionization (CEDI) technology. Performance on these modules has been optimized to produce high purity water for laboratory and smaller scale applications. A wide nominal flow range from 30 - 500 liters per hour increases the applicability for single module installations.



NOTES:  
1. ALL PLUMBING PORTS ARE 3/8" BSPT  
2. ALL 'A' AND 'C' DIM ARE SAME FOR ALL MX VARIANTS

### MX Series Features

- Double O-ring seal & housing guarantees leak-free operation
- Superior electrical isolation
- 75 psi (5 bar), 113°F (45°C) continuous operation
- Proprietary "all-filled" concentrating compartments eliminate recirculation pump and brine injection
- Significantly lower operating costs
- Generate mixed-bed quality deionized water without the use of chemicals
- No need for acid/caustic, neutralization system or exchangable DI tanks
- Continuous production instead of batch, with consistent quality

Ionpure modules consistently deliver maximum reliability and superior performance for power, HPI/CPI, microelectronics, food and beverage and laboratory applications without regeneration downtime.

For additional information on our MX industrial series of modules visit our website at [www.ionpure.com](http://www.ionpure.com).

## ELECTRICAL REQUIREMENTS

Maximum module requirements are 200, 400, 600 VDC, 2.5 Amps.

## OPERATING ENVIRONMENT

Installation should be indoors with no direct sunlight and should have a maximum ambient room temperature of 113°F (45°C).

## QUALITY ASSURANCE STANDARDS

CE marked. Each module is factory tested to meet strict industry standards and is manufactured in an ISO 9001 and ISO 14000 quality and environmental management system.

Halal Certification. All Ionpure modules are manufactured in accordance with the Islamic Food and Nutrition Council of America standards (IFANCA), and will carry the Crescent M Halal logo.

### Physical Specifications

Model Number	Overall Length
IP-MXM030	7.25" (18.41 cm)
IP-MXM060	8.83" (21.27 cm)
IP-MXM125	10.77" (27.37 cm)
IP-MXM250	15.45" (39.23 cm)
IP-MXM500	24.79" (62.96 cm)

### Feed Water Specifications

Feed Water Conductivity Equivalent, including CO <sub>2</sub> and Silica	< 40 µS/cm
Feed Water Source	RO permeate
Temperature	41 - 113°F (5 - 45°C)
Inlet Pressure	≤ 75 psi (5.2 bar)
Maximum Free Chlorine (as Cl <sub>2</sub> )	< 0.02 ppm
Iron (as Fe)	< 0.01 ppm
Manganese (as Mn)	< 0.01 ppm
Sulfide (S <sup>-</sup> )	< 0.01 ppm
pH	4 - 11
Total Hardness (as CaCO <sub>3</sub> )	< 1.0 ppm
Dissolved Organics (TOC as C)	< 0.5 ppm
Silica (SiO <sub>2</sub> )	< 1.0 ppm

### Typical Module Performance

#### Operating Parameters

Recovery	90 - 95%
Pressure Drop Range at Nominal Flow	10 - 20 psi (0.7 - 1.4 bar)

#### Product Water Quality

Product Resistivity	> 16 megohm-cm*
Silica (SiO <sub>2</sub> ) Removal	90 - 99%, depending on feed water

\*Actual performance may be determined using the IP-Pro projection software available from Ionpure.

## FLOW AND PHYSICAL SPECIFICATIONS

Ordering Part Number	Model Number	Product Flow min. gpm (LPH)	Product Flow nominal gpm (LPH)	Product Flow max. gpm (LPH)	Shipping Weight lbs (kg)	Operating Weight lbs (kg)
W3T17324	IP-MXM030	.06 (15)	0.13 (30)	0.19 (45)	10 (4.5)	12 (5.4)
W3T17326	IP-MXM060	0.13 (30)	0.26 (60)	0.39 (90)	13 (5.9)	15 (6.8)
W3T17328	IP-MXM125	0.27 (62.5)	0.55 (125)	0.825 (187)	25 (11)	27 (12)
W3T17331	IP-MXM250	0.55 (125)	1.1 (250)	1.65 (375)	45 (20)	47 (21)
W3T17333	IP-MXM500	1.1 (250)	2.2 (500)	3.3 (750)	75 (34)	79 (36)



210 Sixth Avenue, Suite 3300, Pittsburgh, PA 15222

+1 (866) 926-8420 (toll-free) +1 (978) 614-7111 (toll) [www.ionpure.com](http://www.ionpure.com)

Ionpure is a trademark of Evoqua, its subsidiaries or affiliates, in some countries.

All information presented herein is believed reliable and in accordance with accepted engineering practices. Evoqua makes no warranties as to the completeness of this information. Users are responsible for evaluating individual product suitability for specific applications. Evoqua assumes no liability whatsoever for any special, indirect or consequential damages arising from the sale, resale or misuse of its products.

© 2018 Evoqua Water Technologies LLC Subject to change without notice ION-MXLowFlow-DS-0818